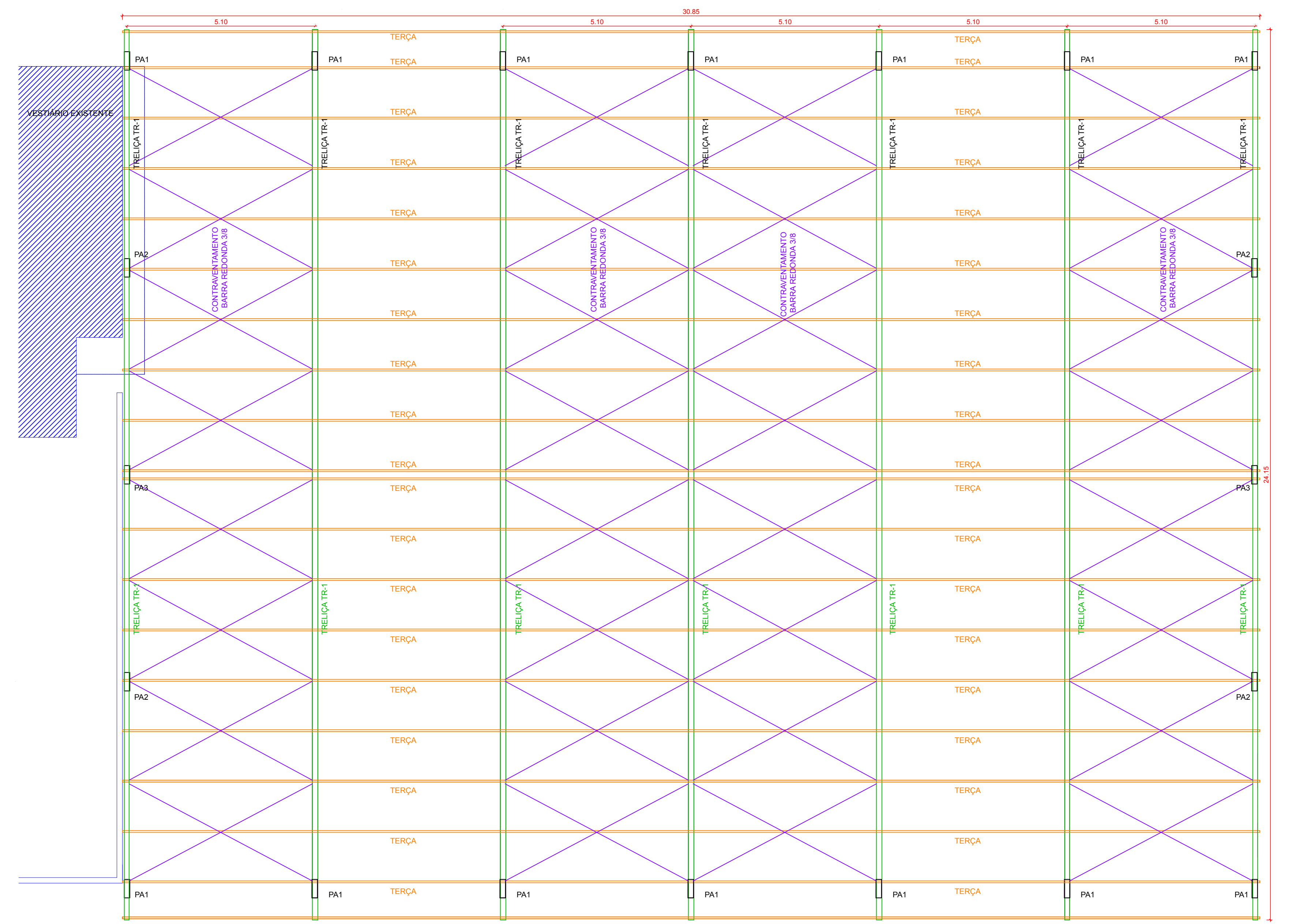
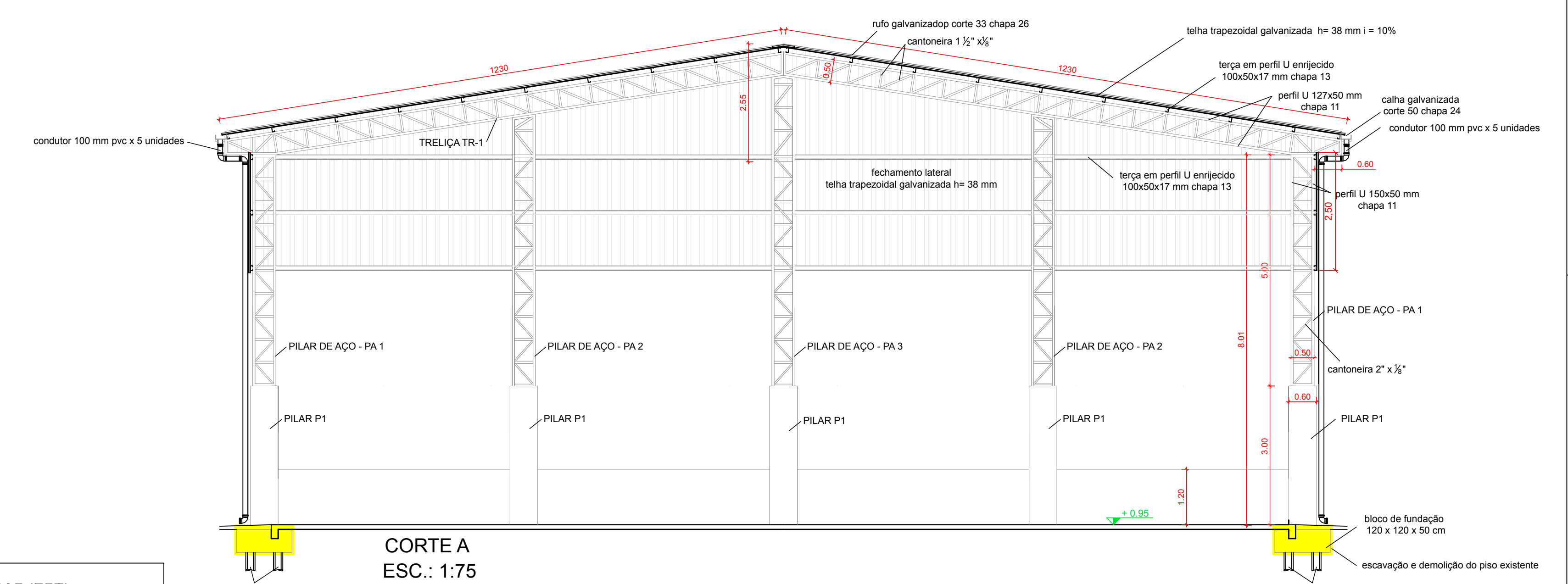


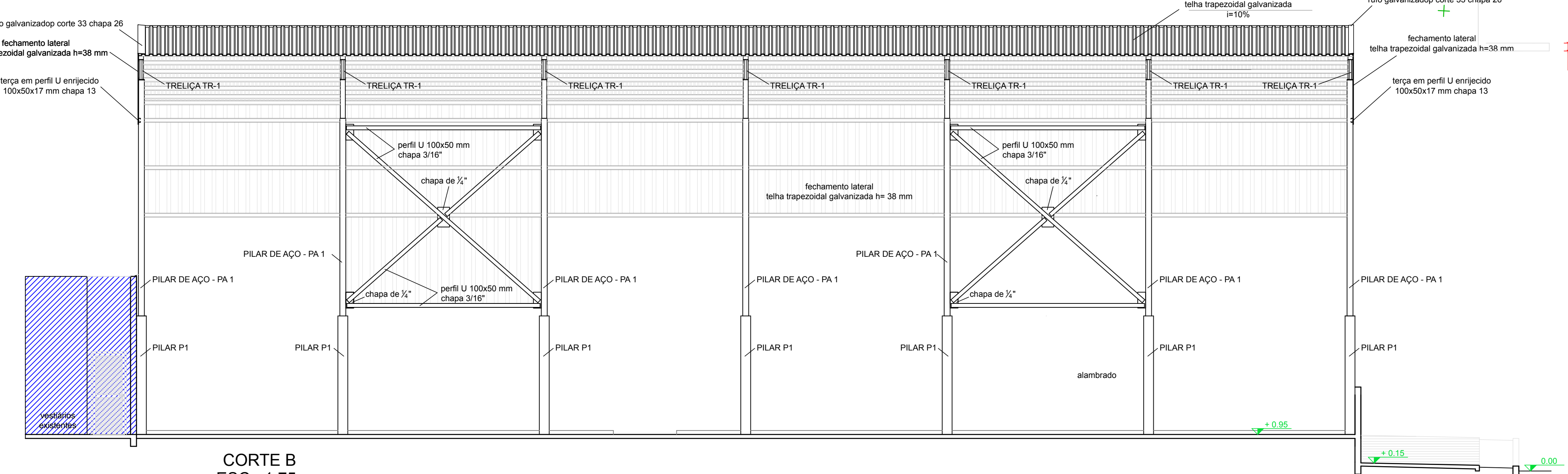
PLANTA BAIXA
ESC.: 1:75



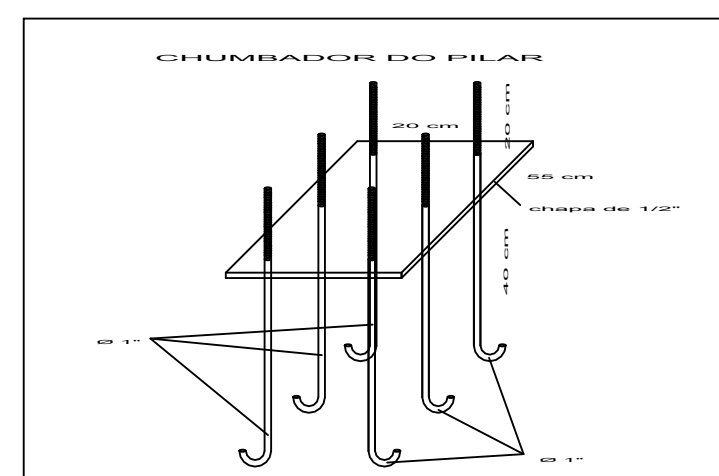
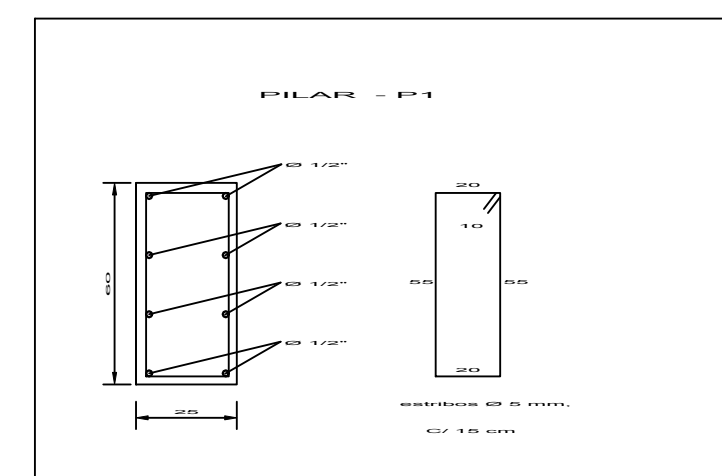
PLANTA DE COBERTURA
ESC.: 1:75



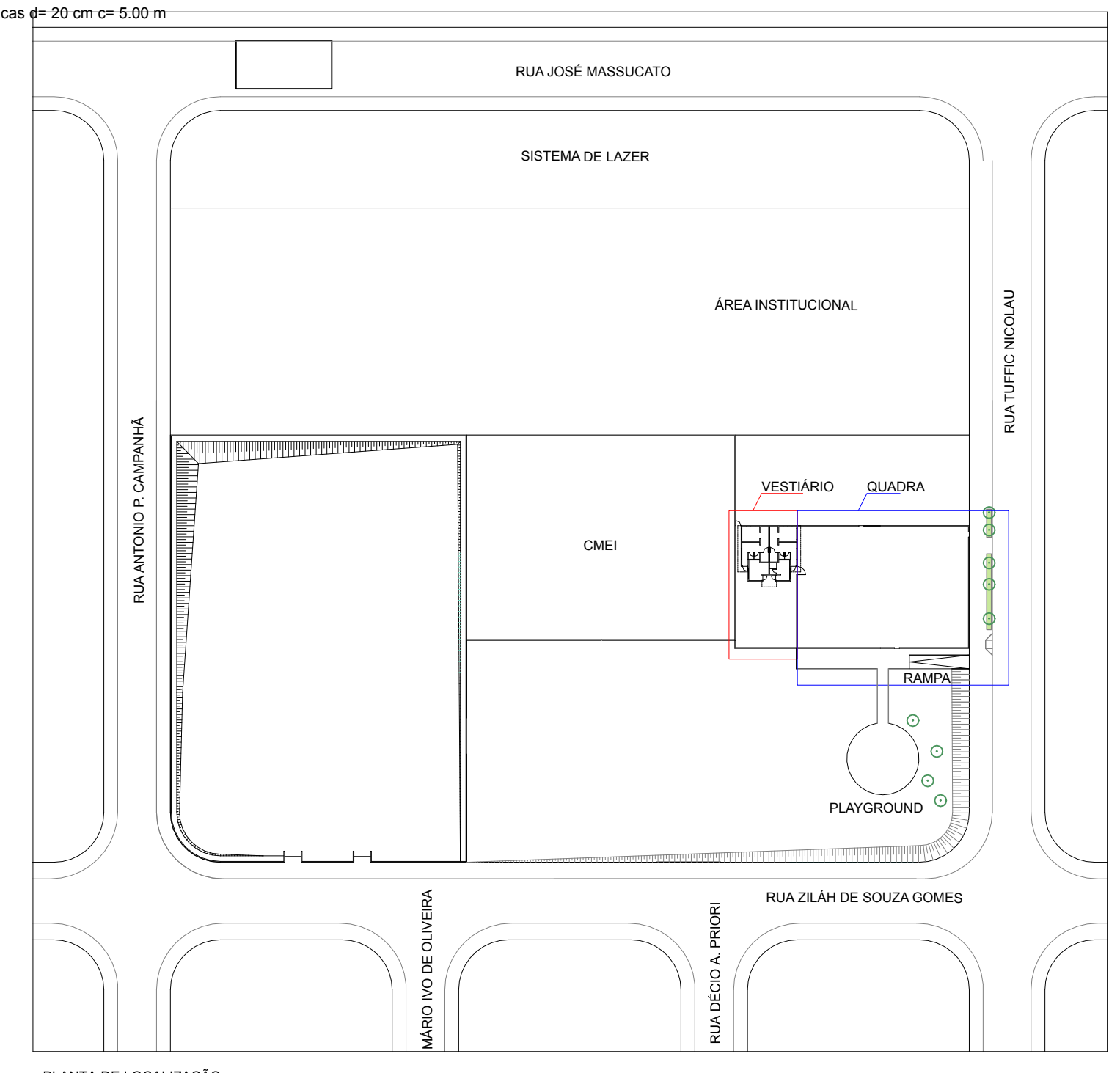
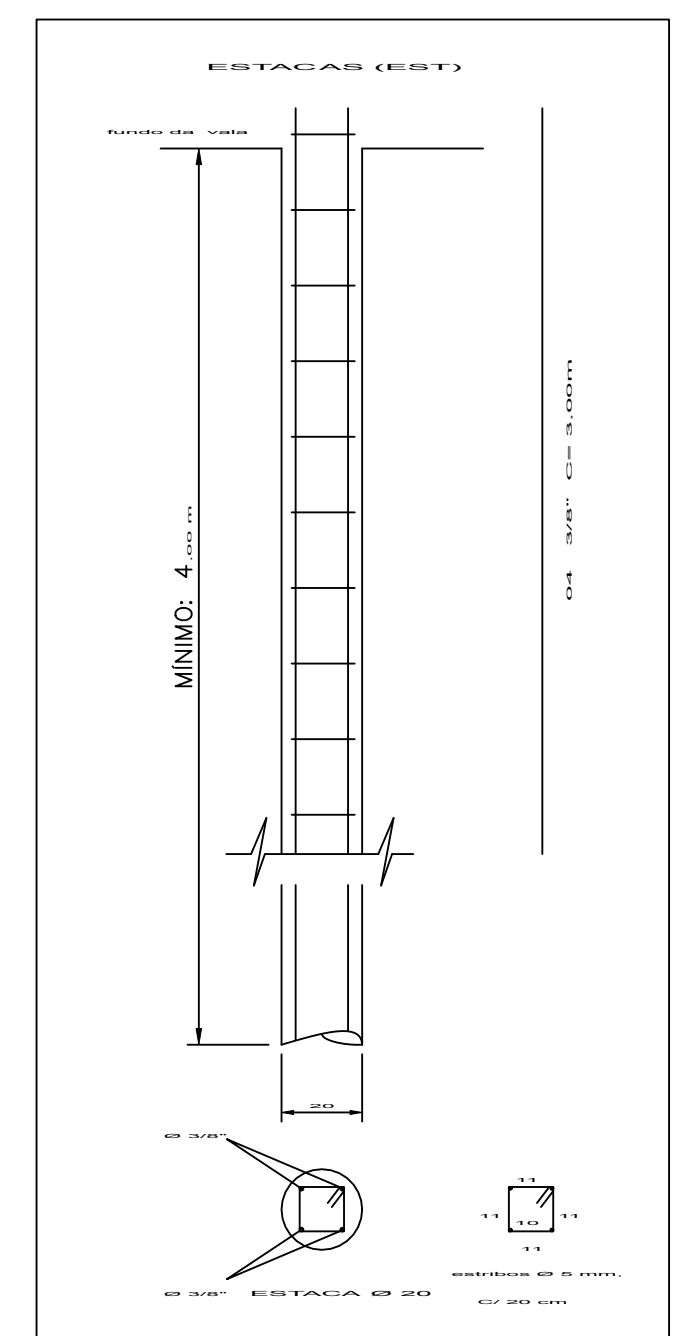
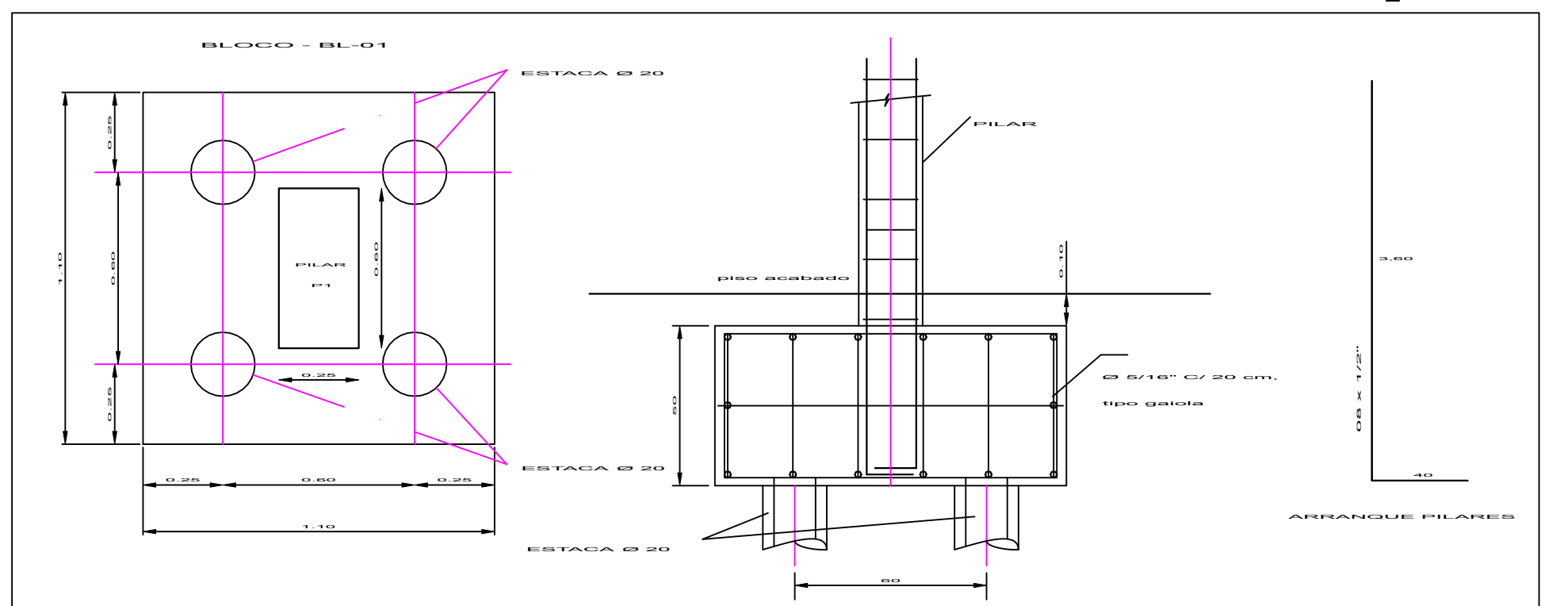
CORTE A
ESC.: 1:75



CORTE B
ESC.: 1:75



DETAILAMENTO DA ESTRUTURA
ESC.: 1:25



PLANTA DE LOCALIZAÇÃO

MUNICÍPIO DE JAHU
SECRETARIA DE PROJETOS

Obra: QUADRA JD. ORLANDO C. OMETTO
Local: RUA ZILAH DE SOUZA GOMES - JD. ORLANDO C. OMETTO - JAHU/ SP
Referência: PROJETO PARA COBERTURA DE QUADRA

ANA LUIZA G. BERTOLDI
ENGENHEIRA CIVIL

SILVIO CESAR GUARNIERI
ARQUITETO

| | | | |
|------------------|--------------------------------|---------------------------------|------------|
| Escala: INDICADA | Impressão: 28 de abril de 2021 | Desenho: SILVIO CESAR GUARNIERI | Fl.: 01/02 |
|------------------|--------------------------------|---------------------------------|------------|